



Explora

JOURNEYS

INTRODUCING EXPLORA JOURNEYS

Explora Journeys is the new **LUXURY** *lifestyle* travel brand launched by the MSC Group with the ambition to **REDEFINE** the luxury cruise category.

The concept: Vibrant, cosmopolitan, relaxed European luxury at sea. Instead of cruises, we create journeys – of the mind, and across the oceans of the world, to destinations on and off the beaten track.

On board: Spaces that offer guests relaxed luxury, creating a home at sea. Restoring life's essential balance with a combination of discovery and appreciation for wellbeing and nature. This is what our new discerning travellers have asked for and this is what they will enjoy on Explora Journeys.

SAIL UNIQUE
AT [EXPLORAJOURNEYS.COM](https://explorajourneys.com)





SAIL UNIQUE

Designed to feel like your own private yacht

Explora Journeys offers guests unparalleled comfort and space, for the first time ever a genuine home-away-from-home at sea.

DISCOVER THE OCEAN STATE OF MIND

Its influence is at the heart of Explora Journeys.

The ocean connects us with ourselves,
other people, and the places around us.
It inspires inner and outer discovery, broadening
horizons and triggering new connections.

We call this powerful, transformative and rewarding
emotional response the Ocean State of Mind.

“This is the guiding force for everything we do,” says
Pierfrancesco Vago, Executive Chairman, MSC Group
Cruise Division. “Everything we do, everything we offer,
is for one reason alone: to ensure our guests reach
the Ocean State of Mind. It is the ultimate benefit that
makes the Explora Journeys experience unique.”

“*Everything* we are is **BASED** on the **SEA**.
The sea gives us *energy*, lets us *breathe*...
it is at the **CORE** of who we are.”

—
ALEXA APONTE VAGO





SAKURA RESTAURANT

UNIQUE COMPLIMENTARY EXPERIENCES

All guests can look forward to receiving a myriad of *complimentary* **DELIGHTS**.

ALL EXPLORA JOURNEYS INCLUDE:

- Nine distinct culinary experiences, including In-Suite Dining
- Unlimited beverages including fine wines, premium spirits, speciality coffees, teas and soft drinks available anytime and in-suite
- Access to the Ocean Wellness - The Spa thermal area
- Complimentary high-speed Wi-Fi throughout the ship
- Group wellness, fitness and mindfulness activities and rituals
- All onboard gratuities
- Shuttle services from port to city centre (where required/available) throughout the ship
- In-suite welcome bottle of champagne on arrival
- A bottle of wine and a bottle of spirit of the guests' choice on arrival
- Authentic and intuitive service from our team of hospitality experts

Additional inclusions and benefits apply to guests staying in Ocean Penthouses and Ocean Residences.

HIGH-SPEED COMPLIMENTARY WI-FI THROUGHOUT THE SHIP

Our ships are equipped with enhanced onboard connectivity by Starlink, ensuring stable high-speed internet and Wi-Fi connection in all suites and public spaces.*

*In certain navigation areas, Wi-Fi connection may be slower or unavailable due to circumstances beyond our control.



YOUR HOME AT SEA

*Elegant, **SPACIOUS** and comfortable*
OCEAN-FRONT suites, penthouses and residences
DESIGNED to create a *home at sea* for our guests.

Each of our ocean-front suites, penthouses and residences – all designed with a refined, European elegance – are created to bring guests closer to the ocean itself, with floor-to-ceiling windows and private sun terraces.

Our suites range from 35 sqm (377 sq ft) to 280 sqm (3,014 sq ft), making them among the most spacious in the category.

ALL SUITES FEATURE:

- Floor-to-ceiling windows
- Private sun terraces with a dining area and a sunbed or sun loungers
- Arriving to find luggage delivered and a chilled bottle of champagne waiting
- Walk-in wardrobe with seated vanity area and Dyson Supersonic™ hair dryer
- Heated bathroom floors
- Individual climate and lighting control in each suite
- Gentle motion-activated bedroom night lights
- Infotainment system with on-demand TV options
- Wireless bedside device charging stations
- Mini-bar replenished according to each guest's preferences
- Espresso machine with biodegradable pods; a kettle and teapot
- Complimentary personal refillable water bottle for each guest
- Mandala Blue custom bath toiletries and amenities for Explora Journeys
- Pair of binoculars for guests' use during their journey

A glass of white wine and a plate of food on a table.

DINING AT SEA

A variety of culinary experiences to discover

The culinary riches aboard Explora Journeys take their influences from across the globe, bringing personality, sophistication and a dash of soul to dining at sea – whether in one of the elegant restaurants, by a pool or on a private terrace.

SIX RESTAURANTS

ANTHOLOGY*

An Italian fine dining experience celebrating a rich tapestry of authentic flavours.

SAKURA

Immersive Pan-Asian dining.

MARBLE & CO. GRILL

A redefined European steakhouse experience.

EMPORIUM MARKETPLACE

Effortless all-day dining restaurant.

MED YACHT CLUB

Celebrating the flavours of the Mediterranean.

FIL ROUGE

French-inspired international cuisine.



MORE CULINARY EXPERIENCES

EXPLORA LOUNGE

A luminous lounge offering stunning 270-degree views, a spectacular backdrop to informal drinking and dining.

CREMA CAFÉ

Bustling European all-day café with infinite sea views.

GELATERIA & CRÊPERIE AT THE CONSERVATORY

Authentic French and Italian indulgences.

CHEF'S KITCHEN*

An immersive experience offering culinary classes.

IN-SUITE DINING

Refined dining in the comfort of your suite or private terrace, available 24 hours.



*An exclusive experience fee applies

LOUNGING & ENTERTAINMENT

Reimagining entertainment with the right vibe for the right time

Diverse entertainment choices with the perfect blend of vibrancy and privacy across 12 indoor and outdoor bars and lounges.

An effortless, cosmopolitan atmosphere in which to discover, enjoy and appreciate diverse talent from around the world.



LOBBY BAR

A centrally-located social bar and lounge.

EXPLORA LOUNGE

Luminous lounge offering spectacular 270-degree views of the ocean and informal drinking and dining.

MALT WHISKY BAR

A refined tour of the global whisky regions.

JOURNEYS LOUNGE

Mixology, enrichment and entertainment continuously evolving throughout the day.

ASTERN LOUNGE

All-day lounge for a seaside escape opening up to the Astern Pool.

SKY BAR ON 14

A panoramic lounge setting, ideal for soothing cocktails and infinite views.

CREMA CAFÉ

Bustling café lounge with sea views.

ASTERN POOL & BAR

An all-day pool and lounge setting for a seaside escape on deck 5.

ATOLL POOL & BAR

An intimate pool on deck 10 with a chilled vibe throughout the day.

HELIOS POOL & BAR

A panoramic adults-only pool and lounge experience.

THE CONSERVATORY POOL & BAR

A weather-protected all-day poolside lounge.

GELATERIA & CRÊPERIE

AT THE CONSERVATORY

Authentic French and Italian indulgences.



LOBBY BAR ON EXPLORA I & EXPLORA II

OCEAN-INSPIRED WELLNESS

Inner and outer wellbeing

Ocean Wellness encompasses the physical, spiritual, and emotional health of our guests, ensuring their time with us is enriching and fulfilling.

It is an ocean-inspired experience deeply rooted in the origins of Explora Journeys.



700+ **SQM**

(7,500+ sq ft)

of space dedicated to
relaxation and rejuvenation

11

SERENE TREATMENT ROOMS

including private spa suites with
dedicated outdoor relaxation areas
and the Medi-Luxe treatment room
by Dr Levy Switzerland

MULTISENSORIAL EXPERIENCE AREAS

like a regenerative hydrotherapy
pool; contrast therapy
(Finnish Sauna, Steam Room,
ice fall); salt cave

270 **SQM**

(2,906 sq ft)

Fitness Centre and Fitness Studio,
as well as Open Air Fitness area
designed in partnership
with Technogym

HOLISTIC WELLNESS

Pilates Reformers, outdoor cycling
and rowing, Technogym Artis
line equipment for functional
and strength training

BESPOKE FITNESS CLASSES

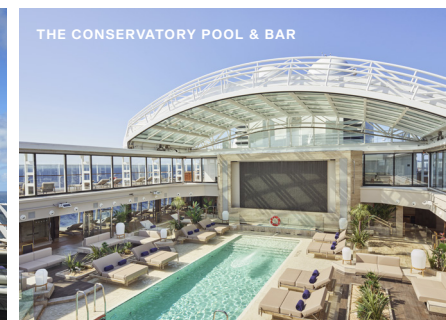
created in partnership
with Technogym



POOLSIDE LEISURE

Generous outdoor decks – offering more than 6,200 sqm (66,736 sq ft) of **SPECTACULAR** sea **VIEWS** – combined with numerous *indoor* and *outdoor* pools and whirlpools on the ship's promenade deck for an **EXPERIENCE** inspired by *seas* and *oceans*.

- Three heated outdoor pools, including one for adults-only
- One heated, weather-protected indoor pool with a retractable glass roof, the largest and only in category at 1,200 sqm (12,917 sq ft)
- 64 private cabanas at no additional fee
- One indoor hydrotherapy pool
- Five indoor and outdoor whirlpools
- Several poolside and outdoor bars and lounges





THE JOURNEY BOUTIQUE

CURATED SHOPPING EXPERIENCES

Discover bespoke shopping experiences inspired by the Ocean State of Mind and influenced by the destinations we visit. Step into a world of opulence as you explore dedicated spaces for *Rolex* — the first-ever Rolex boutique at sea — alongside *Cartier*, *Panerai*, *Piaget*, and *Buccellati* aboard our ships.*

The *Journey*, an exclusively curated concept, offers a tempting collection of products from inspiring brands devoted to people and the planet, with every item a testament to the creativity and care shown by our artisanal suppliers.



ROLEX BOUTIQUE



BUCCELLATI BOUTIQUE



CARTIER WATCH STORE



PANERAI BOUTIQUE

* Rolex boutique available exclusively on EXPLORA I, Buccellati on EXPLORA II.

JOURNEYS FOR THE WHOLE FAMILY

Our promise of a 'Home at Sea' is, of course, extended to your entire family. We welcome all generations and believe few things are as satisfying and enjoyable as special moments spent on holiday when you can all be together.



NAUTILUS CLUB

A space dedicated to our younger guests

Nautilus Club is a space dedicated to our younger guests, where a team of expert hosts will make sure they will be entertained and enriched in the company of other guests their own age. Nautilus Club offers the latest generation of video games and VR consoles, such as PlayStation 5 and PlayStation VR2, Xbox, Nintendo Switch, iPads and Oculus Pro. The space also offers other activities such as sports sessions, technology tournaments, paint art, and craft play, along with games in locations throughout the ship.



MULTI-GENERATION-FRIENDLY CONNECTING SUITES

Ensuring that families and larger groups can enjoy plenty of space and privacy, our ships offer multiple multi-generation-friendly connected suites across the categories of Ocean Suites, Ocean Penthouses and Ocean Residences.



CURATED FAMILY-FRIENDLY DESTINATION EXPERIENCES

A series of Destination Experiences have been curated to be enjoyed by the whole family, ensuring that you create the most unforgettable moments together. The exciting experiences feature easily accessible and fun edu-tainment activities such as a day at a farm or a visit to a space centre where children will get to meet and hear stories from a real astronaut.



ADULTS-ONLY SPACES

For a moment of stillness and serenity, guests can enjoy the Helios Pool & Bar on deck 12, a panoramic area at the forward part of the ship exclusively reserved for adults only. Most of the other public spaces, restaurants, bars, lounges and pools on all our ships welcome families and children.



OUR SHIPS

An ultra-elegant fleet of six exceptional ships,
designed to feel like your own private yacht.



THE CONSERVATORY POOL

SIX EXCEPTIONAL SHIPS

EXPLORA I

2023

EXPLORA II

2024

EXPLORA III

2026

EXPLORA IV

2027

EXPLORA V

2027

EXPLORA VI

2028

Discover *unparalleled comfort* and *space* on board our ships, for the first time ever a genuine home-away-from-home at sea



EXPLORA I

- Length: 248 m (~813 ft)
- Guest per hosts ratio: 1.25 : 1

461 OCEAN FRONT SUITES

- 1 Owner's Residence
- 22 Ocean Residences
- 67 Ocean Penthouses
- 371 Ocean Terrace and Ocean Grand Terrace Suites
- 80 family-friendly connecting suites

EXPLORA II

- Length: 248 m (~813 ft)
- Guest per hosts ratio: 1.25 : 1

461 OCEAN FRONT SUITES

- 1 Owner's Residence
- 22 Ocean Residences
- 67 Ocean Penthouses
- 371 Ocean Terrace and Ocean Grand Terrace Suites
- 80 family-friendly connecting suites



EXPLORA III

- Length: 268 m (~879 ft)
- Guest per hosts ratio: 1.25 : 1

463 OCEAN FRONT SUITES

- 2 Owner's Residences
- 39 Ocean Residences
- 109 Ocean Penthouses
- 70 Ocean Grand Terrace Suites
- 243 Ocean terrace suites
- 54 multi-gen-friendly connecting suites

EXPLORA I - EXPLORA II - EXPLORA III

OVERVIEW

ELEGANT, SPACIOUS AND COMFORTABLE OCEAN-FRONT SUITES, ALL FEATURING

- Floor-to-ceiling windows and elegant interiors
- Private sun terraces with a dining area and a sunbed or sun loungers
- Walk-in wardrobe with seated vanity area
- Heated bathroom floors

11 DISTINCT CULINARY EXPERIENCES

- Focused on healthy, delicious food from local, sustainable sources
- Celebrating global cooking talents, provenance and flavours from around the world
- Six vibrant restaurants and numerous lounges, as well as In-Suite Dining

NUMEROUS LOUNGING AND ENTERTAINMENT EXPERIENCES

- 12 indoor and outdoor bar and lounge experiences with curated entertainment
- Casino, art gallery, culinary school and curated shopping experiences

GENEROUS OUTDOOR DECKS

- Three heated outdoor pools, including one adults-only, and one indoor pool with retractable glass roof
- Multiple private cabanas
- Multiple indoor and outdoor whirlpools
- Poolside dining and lounging

HOLISTIC WELLNESS AND FITNESS

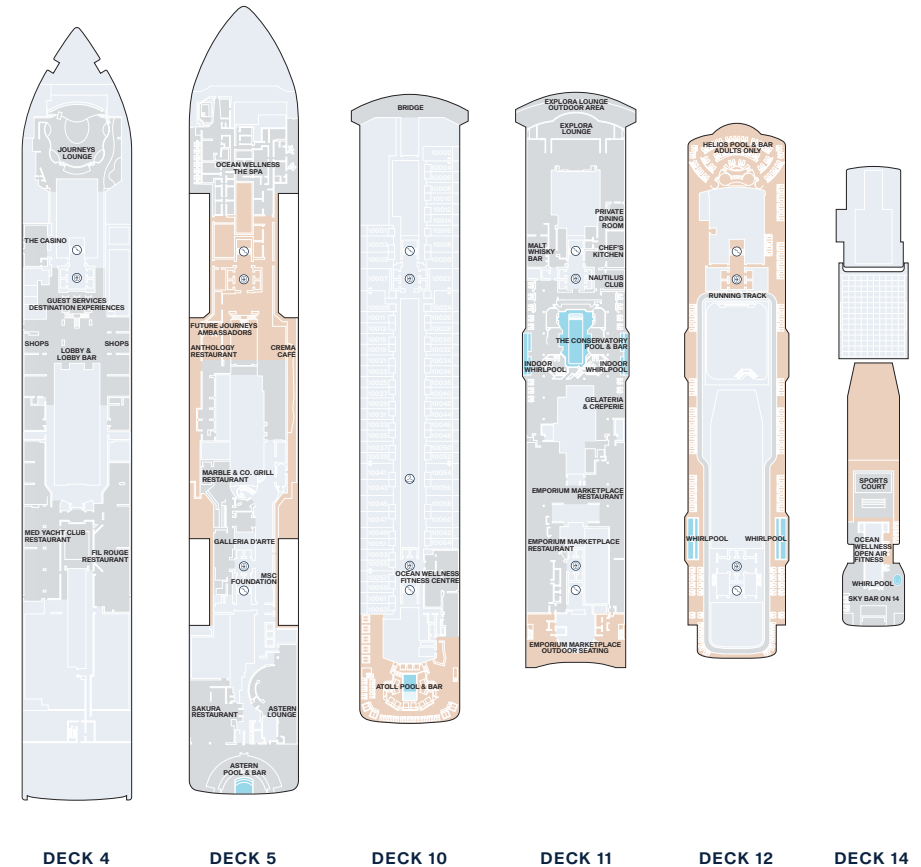
- Over 700 sqm (7,500 sq ft) of indoor and outdoor wellness facilities
- Over 270 sqm (2,900 sq ft) of fitness facilities with latest equipment

THE LATEST ENVIRONMENTAL-SUPPORTING TECHNOLOGIES

- Hybrid-ready energy solutions
- Waste-management and energy-saving solutions
- No single-plastic used onboard and ashore



DECK PLANS



DISCOVER OUR FLEET
EXPLORA I, EXPLORA II, EXPLORA III



OUR AWARDS

We are honoured to lead the industry, distinguished by a remarkable array of prestigious awards that reflect our unwavering dedication to the pursuit of excellence.



BEST NEW CRUISES IN THE WORLD

CONDÉ NAST TRAVELLER
THE HOT LIST 2024



BEST NEW CRUISES SHIPS 2023

TRAVEL + LEISURE
IT LIST WINNER 2024



BEST CRUISE LINES IN THE WORLD (UK)

CONDÉ NAST TRAVELLER 2024
READERS' CHOICE AWARDS



BEST CRUISE LINES IN THE WORLD (US)

CONDÉ NAST TRAVELLER 2024
READERS' CHOICE AWARDS



OVERALL BEST CRUISE CUISINE

TRAVEL WEEKLY US
GOLD MAGELLAN AWARD



BEST FOR FAMILIES (LUXURY CATEGORY)

CRUISE CRITIC'S 2024
BEST IN CRUISE AWARDS





OUR JOURNEYS COLLECTION

Explora Journeys is **CREATING** a *collection* of journeys that offer the *perfect* **BLEND** of *celebrated* destinations and less-travelled spots, both seen from *new* and original *points of view* that will **INSPIRE** and **EXCITE** in equal measure.

OUR DESTINATIONS

The *perfect blend* of **CELEBRATED DESTINATIONS**
and *off-the-beaten-path* ports.

SLOWER PACE AND DEEPER IMMERSION

Most of the journeys in our collection offer overnights and longer stays (or unconventional times of arrival/departure) at destinations for in-depth exploration of the local culture and experiences, while avoiding crowds and larger ships.

SEAMLESS TRAVEL WITH FLEXIBLE ITINERARIES

Experience magical journeys, starting at 7 nights, extendable to 14 or 21 nights, all from easy-to-reach ports.

WORRY-FREE TRAVEL WHERE EVERYTHING IS TAKEN CARE OF

Pre- and post-journey hotels, flights, transfers and luggage handling: our Explora Experience Ambassadors ease you into your travel experience by taking care of essential arrangements before and after your journey.

THE ULTIMATE OCEAN ESCAPE WITH EXTENDED JOURNEYS

Guests can combine any consecutive journeys they wish.

Extended Journeys are two or more consecutive journeys that together, present deeper, longer travel with more cultural immersion, savings and the ease of remaining in the same suite throughout the whole journey.

VIEW OUR JOURNEYS COLLECTION:





OUR DESTINATION EXPERIENCES

The **'OCEAN STATE OF MIND'** is not lost when venturing ashore. At *every destination*, Explora Journeys provides **INSPIRING** opportunities for guests to discover authentic cultural, historical, and culinary delights from an extraordinary perspective.

EXPLORE WITH PEACE OF MIND

- Intimate, smaller groups with like-minded guests, for immersion to local culture – opportunities to understand the culture, connect with locals and feel the real vibe of the places visited
- Enriching opportunities to explore destination essentials, get behind-the-scenes and experience unique locations reserved for Explora Journeys guests, led by local experts
- Seamless and worry-free experiences with everything taken care of, no hidden fees, fully insured partners, transportation arrangements and flexibility in change of plans. If an experience is delayed, our ship will wait
- Crafted experiences curated in collaboration with expert partners and ambassadors such as explorer Mike Horn

VIEW OUR JOURNEYS COLLECTION:





PRE- & POST-JOURNEY HOTELS, FLIGHTS & TRANSFERS

Let our **EXPLORA EXPERIENCE** Ambassadors ease you into your *travel experience* by *taking care* of *essential* arrangements before and after your journey.

LUXURY HOTEL STAYS

Our comprehensive hotel programme is the perfect option to enrich your explorations. Through our extensive partnerships with leading hoteliers around the globe, we can arrange bespoke accommodations in and around our port destination cities for any duration, room category or cultural experience.

TRUSTED TRANSFERS

Our worry-free transfers can add that extra step of ease to your journey. Group and private transfers can be arranged between the airport and pier or between the pier and the hotel on days of either embarkation or disembarkation.

AIR TRAVEL

Allow us to schedule and reserve your flights to ensure an effortless coordination of your travels. Excellent relationships with global airlines means we can ensure the best possible fares, schedules and choice of class to tie in with your journey.

PRIVATE AIR CHARTERS

Privacy, flexibility and simplicity are the key reasons to choose our private flight arrangements. Our Explora Experience Ambassadors can help you choose from a significant range of aircraft solutions to fit the personalised travel needs for couples, a mid-sized family, or a larger group of friends and family.

We complete our service with home-to-ship transfers and seamless luggage handling for the utmost in safe and convenient travel.

SEAMLESS LUGGAGE HANDLING

For the ultimate ease of travel, our luggage valet programme allows you to ship your travel cases directly from your front door and have them waiting for you at your suite on board the ship and vice versa.

Please contact us for more information.

SUSTAINABILITY COMMITMENT

Explora Journeys is committed to helping create a more positive future, not just for this generation but for the generations to come.

“The sea is our source. We hold the seas and oceans that sustain our planet in the very highest regard.”

PIERFRANCESCO VAGO

Executive Chairman,
Cruise Division MSC Group



LEAVING THINGS BETTER FOR THE NEXT GENERATIONS

The innate respect for the ocean is why Explora Journeys – in partnership with Fincantieri – is committed to building the ships of tomorrow, utilising the very latest technologies.

All six ships will be RINA Dolphin-certified, ensuring reduced underwater noise, which in turn contributes to the preservation of marine life.

EXPLORA III, IV, V and VI will be LNG-powered, with a research project underway for EXPLORA V and EXPLORA VI to have large fuel cell capacity capable of transforming renewable LNG into hydrogen and significantly reducing emissions.

MSCFOUNDATION
m
sc

Explora Journeys is dedicated to supporting environmental, humanitarian and sustainable development commitments worldwide through the MSC Foundation, a private non-profit foundation established by the Aponte family.

Inspired by the MSC Group's values and motivated by a deep sense of responsibility for the planet and its resources, the foundation's mission is to utilise MSC's global reach and unique knowledge of the ocean to take immediate action that contributes to protecting and nurturing the blue planet.

The foundation also supports sustainable ecosystem management, empowers vulnerable communities, promotes inclusive education, and aids disaster recovery efforts.

START YOUR JOURNEY

For an easy and efficient booking experience

PLEASE CONTACT YOUR
PREFERRED TRAVEL ADVISOR

VISIT
EXPLORAJOURNEYS.COM

CONTACT THE EXPLORA EXPERIENCE CENTRE
via email at: contact@explorajourneys.com
or phone from the list below:

AMERICAS

UNITED STATES

MEXICO

PUERTO RICO

1 833 925 1567

+1 216 672 6653

—

ARGENTINA

BRAZIL

PERU

++ 800 08250865

+1 216 672 6653

—

CANADA

1 833 925 1567

+1 216 672 6653

—

CHILE

+ 56 800 914 946

+1 216 672 6653

—

COLOMBIA

URUGUAY

++ 800 08250865

+1 216 672 6653

—

VENEZUELA

+1 216 672 6653

EUROPE

EUROPEAN UNION –

EXCEPT ITALY

++ 800 08250863

+ 41 43 5086478

—

ITALY

800 973 726

+41 43 5086478

—

SWITZERLAND

+ 41 43 5086478

—

UNITED KINGDOM

0 800 031 8935

+ 41 43 5086478

—

ISRAEL

00 800 08250863

+ 41 43 5086478

—

OTHER COUNTRIES

+ 41 43 5086478

ASIA PACIFIC

AUSTRALIA

1 800 595 257

—

CHINA

JAPAN

MALAYSIA

NEW ZEALAND

PHILIPPINES

SINGAPORE

THAILAND

+ 800 08250851

—

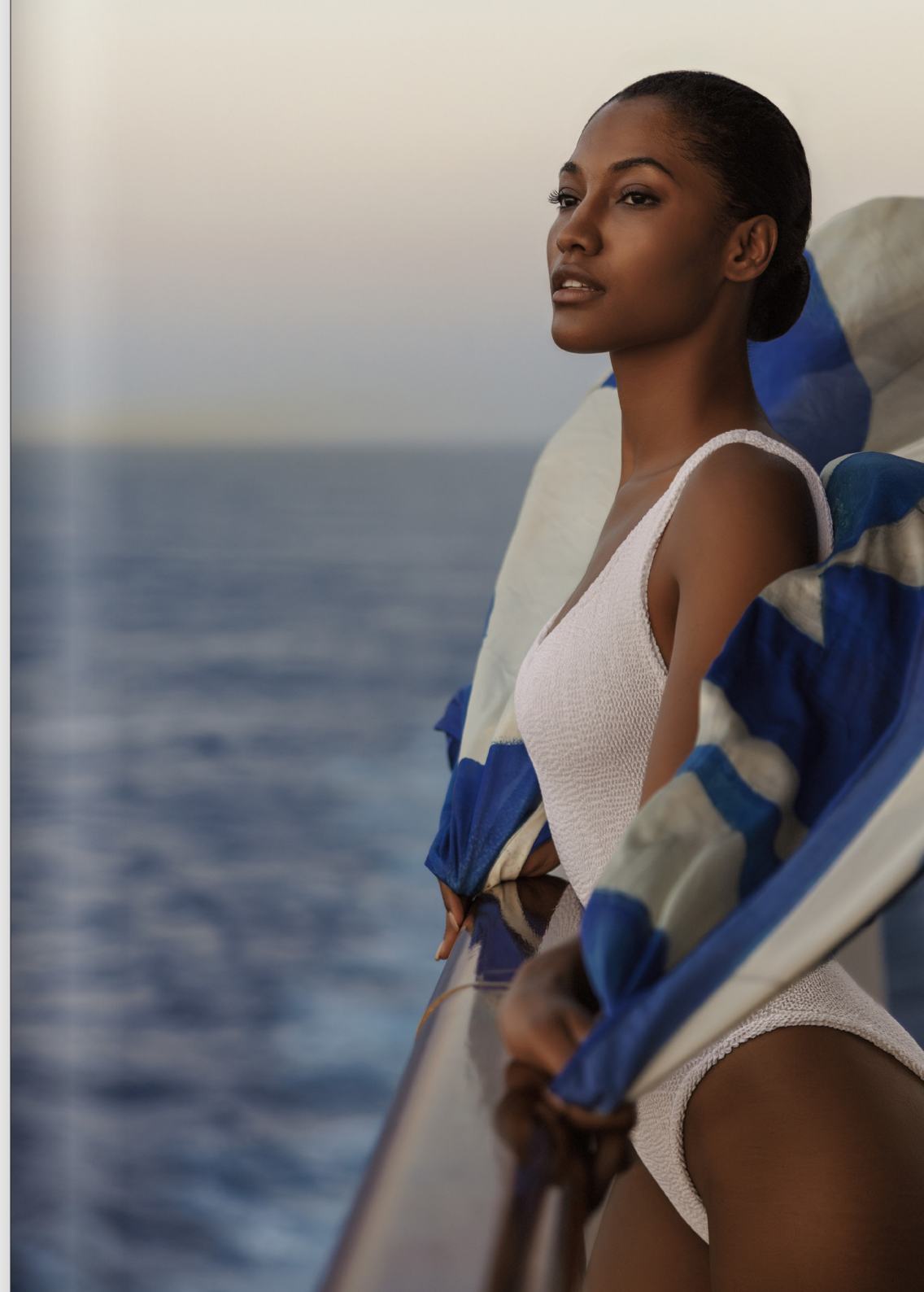
INDIA

OTHER COUNTRIES

+ 41 43 5086478

*Telephone numbers are subject to change. Local and national telephone rates apply.
Toll-free phone number is for landlines. You may be charged when calling from a mobile phone.*

FEBRUARY 2025





[EXPLORAJOURNEYS.COM](https://explorajourneys.com)